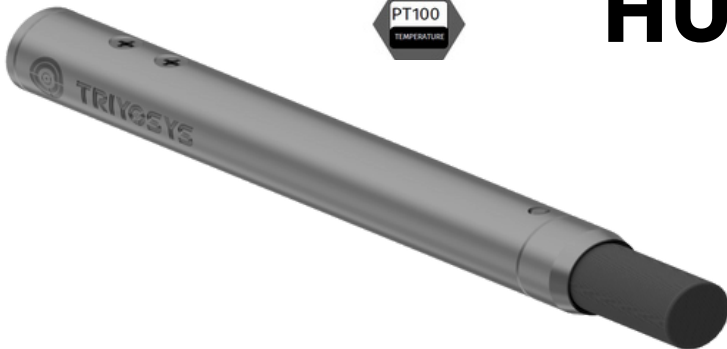




AIR TEMPERATURE AND RELATIVE HUMIDITY SENSOR

TS-S-TH



It is a sensitive sensor that can work in harsh weather and ambient conditions to measure relative humidity and air temperature. It has low power consumption and high measurement accuracy.

Thanks to the sinter filter on it, it can make reliable measurements in any environment. It has analog, digital and both analog and digital outputs. It can be easily mounted on different structures such as ships and buildings. It can work in harsh weather conditions with its accessories.

TECHNICAL DATA:

- Measuring Range Air Temperature: -40...+70 °C
- Measuring Range Relative Humidity: 0...100 %r.h.
- Accuracy Air Temperature: ± 0.1 °C, 1/3 DIN IEC 751 Class B
- Accuracy Relative Humidity: ± 2 % r. h. at: 5...95 % r. h. • +10...+40 °C (at > 0.5 m/s) • plus: 0.1 % r. h./ °C at: +10 °C • > +40 °C
- Range of Application: 0...100 % r. h. • -40...+70 °C
- Supply Voltage and Power Consumption: 6...30 VDC ---- 10mA
- Measuring Elements: Humidity: Capacitive, Temperature: Pt100 1/3 DIN (DIN EN 60571) • IEC 751 Class B (± 0.1 °C)
- Housing: Stainless steel • IP 65 • Protection class of filter IP 40 • Sinter filter for outdoor use
- Dimensions and Weight: 0.2 kg
- Cable: 3 m

Functions	TS-S-TH-01 With analog output		TS-S-TH-01-DI With digital output		TS-S-TH-01-DA With both analog output and digital output	
	Pin Description	Pin Number	Pin Description	Pin Number	Pin Description	Pin Number
Supply pins	Vin (+)	1	Vin (+)	1	Vin (+)	1
	GND (-)	2	GND (-)	2	GND (-)	2
Analog Output Pins	0 - 1VDC (+)	3	-	-	0 - 1VDC (+)	3
	0 - 1VDC (GND)	4	-	-	0 - 1VDC (GND)	4
Digital Output Pins	-	-	TX (+)	3	TX (+)	5
	-	-	TX (-)	4	TX (-)	6
PT100 Output Pins	Force (+)	5	RX (+)	5	RX (+)	7
	Force (-)	6	RX (-)	6	RX (-)	8
	RTDIN (+)	7	RS-GND	7	RS-GND	9
	RTDIN(-)	8	Force (+)	8	Force (+)	10
	-	-	Force (-)	9	Force (-)	11
	-	-	RTDIN (+)	10	RTDIN (+)	12
-	-	RTDIN(-)	11	RTDIN(-)	13	