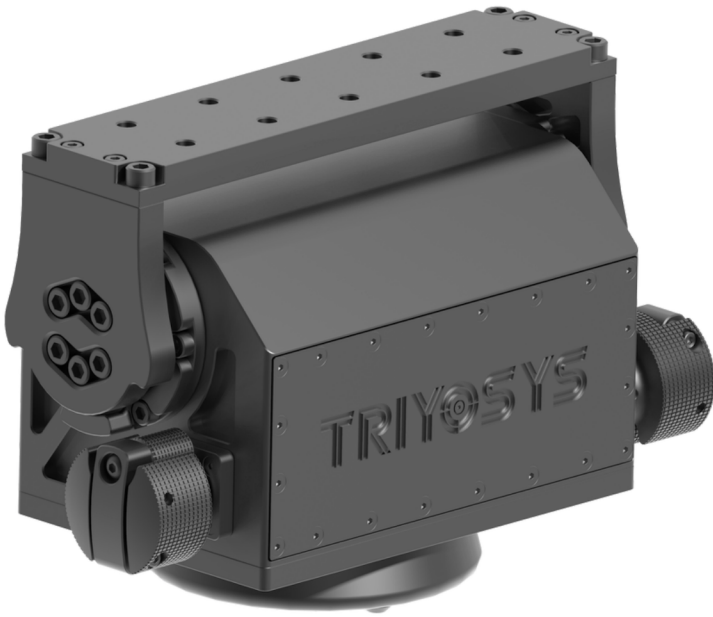


PAN TILT

TS-PT-05 SERIES

TS-PT-05 is a manual positioner unit capable of moving in pan and tilt axes to positions where precise positioning and alignment is required under heavy loads. Designed according to military standards, the TS-PT-05 positioner unit is resistant to all kinds of harsh conditions.



FEATURES

- Designed for heavy loads up to 50 kg
- Made of 100% CNC, high strength 6000 series aluminum and stainless steel
- Corrosion resistant coating and paint
- 5/8"-11 UNC mounting interface port
- Quick adjustable manual brakes
- IP-67 Protection class
- Use of portable pan and tilt arms

Technical data	
Payload Capacity	50 kg
Weight	6 kg
Pan Axis Movement	n × 360° (Lockable)
Tilt Axis Movement	90° (+45° / -45°) (Lockable)
Tilt Axis Fine Adjustment	±1.5°
Operating Temperature Range	-32°C to 55°C
Protection / IP Rating	IP 67
Material	6000 series aluminum and stainless steel